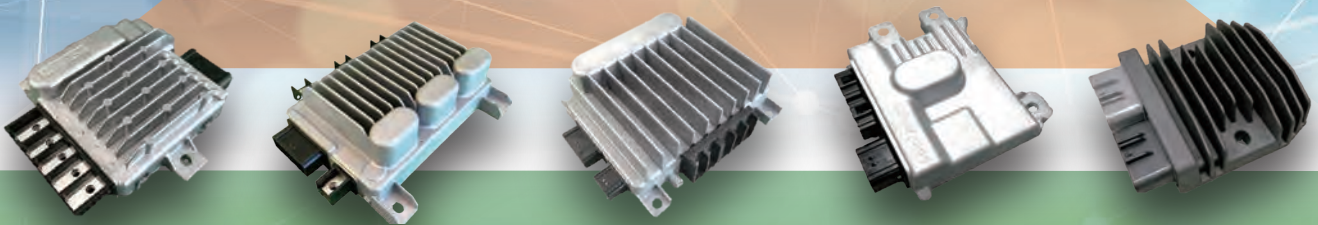


# PRODUCT CATALOG

For Electric vehicle : Power control unit  
For ICE vehicle : ISG ECU & REG RECT



# ShinDengen

New power. Your power.

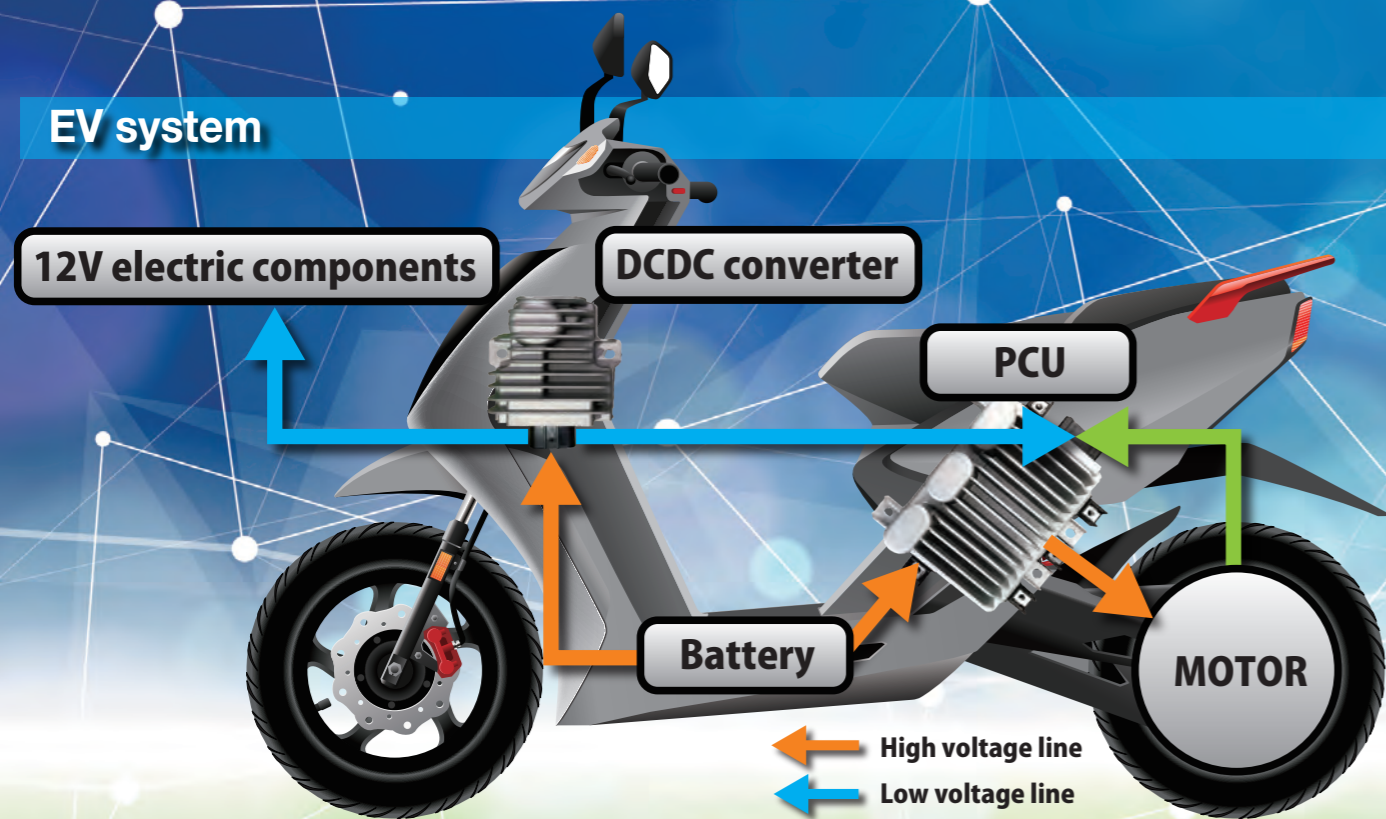


# Power Control Unit

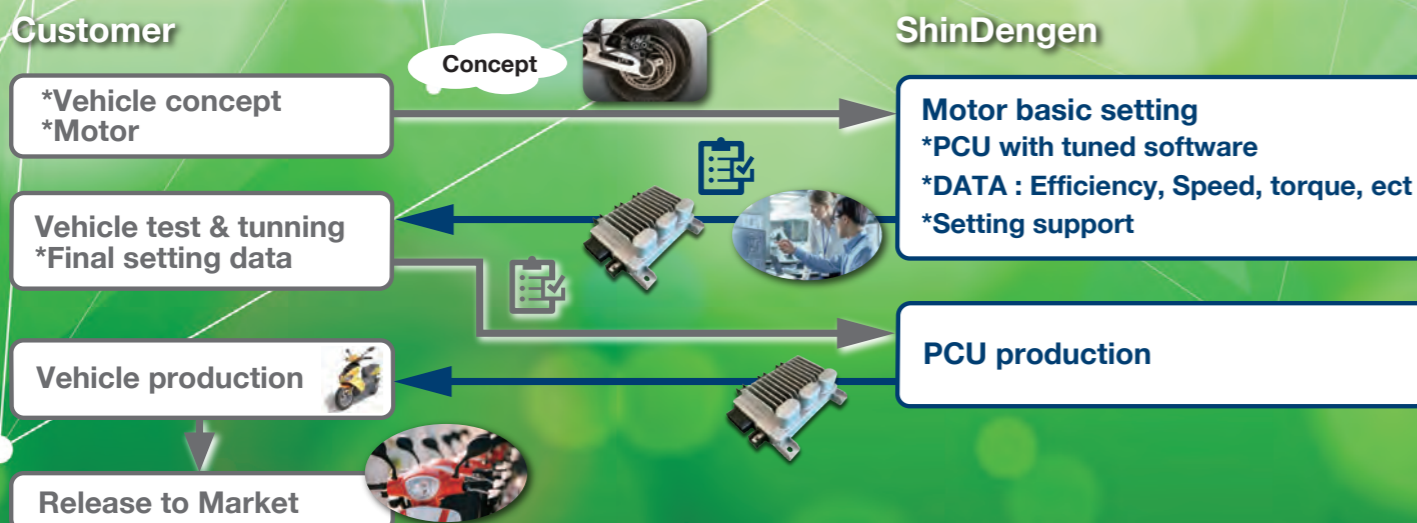
Comprehensive support for EV development

ShinDengen will exhibit a variety of electric two-wheeler products at the 16th AUTO EXPO 2023 COMPONENT to be held in New Delhi, India. Our company produces over 5 million ECU for two-wheel vehicles globally per year, and regards India, where continued market expansion is expected going forward, as one of our strategic locations, implementing various measures aimed at the market such as the establishment of ShinDengen India Pvt. Ltd. in 2012. At AUTO EXPO 2023, we will be focusing on electric two-wheeler, which are expected to become more popular in India as going forward, and will also be releasing our company's latest PCU for the first time anywhere in the world. Visitors to our exhibition booth can experience ShinDengen's technologies for themselves by running a two-wheel EV motor equipped with our PCU.

## EV system



## PCU development flow



## 2 kW PCU

Ratings	Input Operation Voltage	High 30V-72V / Low 8V-16V
	Output Maximum Phase Current	Start: 100Arms - 2sec Operation: 30Arms ※Air cooling
Size	Size (W*L*H mm)	114.5 * 108 * 39.8
	※Excluding mounting part and connector	
	Weight (kg)	0.84
Motor	Motor type	3 phase synchronous motor

## 6 kW PCU

Ratings	Input Operation Voltage	High 30V-60V / Low 8V-16V
	Output Maximum Phase Current	Start: 230Arms-2sec Operation: 60Arms ※Air cooling Operation:100Arms ※Forced air cooling 5m/s
Size	Size (W*L*H mm)	130 * 167 * 58
	※Excluding mounting part and connector	
	Weight (kg)	1.6
Motor	Motor type	3 phase synchronous motor

## 6.5 kW PCU

Ratings	Input Operation Voltage	High 70V-120V / Low 8V-16V
	Output Maximum Phase Current	Start: 230Arms-3sec Operation: 55Arms ※Air cooling Operation: 85Arms ※Forced air cooling 5m/s
Size	Size (W*L*H mm)	144.2 * 178.2 * 63.4
	※Excluding mounting part and connector	
	Weight (kg)	2.5
Motor	Motor type	3 phase synchronous motor

## ISG ECU

Ratings	Input Operation Voltage	14.5±0.2V
	Maximum phase current	30Arms
Size	Size (W*L*H mm)	103* 86 * 35
	※Excluding mounting part and connector	
	Weight (kg)	0.5
Others	Control Method	Phase Control
	Communication with FI-ECU	CAN

## REG RECT FH027

Parts number	FH027AA	
Ratings	Input Operation Voltage	14.5±0.2V
	Output max phase current	31.8A
Size	Size (W*L*H mm)	90 * 85 * 32
	※Excluding mounting part and connector	
	Weight (kg)	0.315
REG Type	FH type 3phase full wave	

## REG RECT FH022

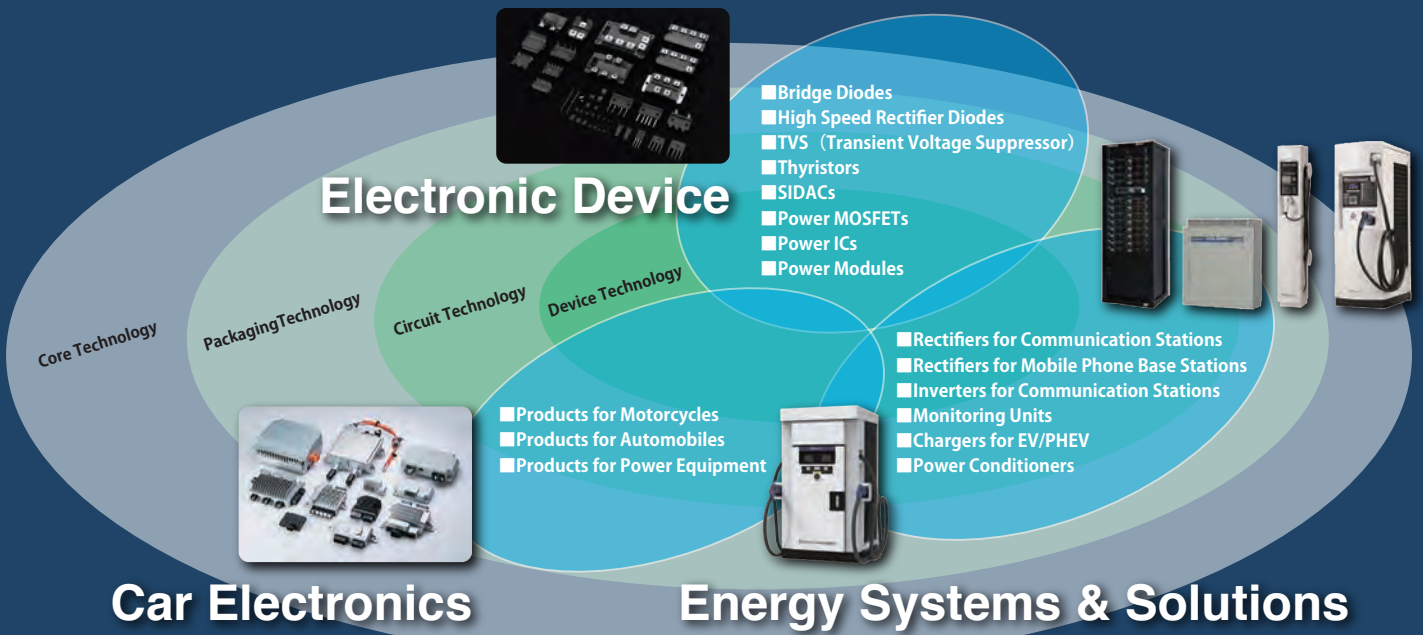
Parts number	FH022BA	
Ratings	Input Operation Voltage	14.5±0.2V
	Output max phase current	22A
Size	Size (W*L*H mm)	66* 80 *31
	※Excluding mounting part and connector	
	Weight (kg)	0.19
REG Type	FH type 3phase full wave	

## REG RECT SH846CA

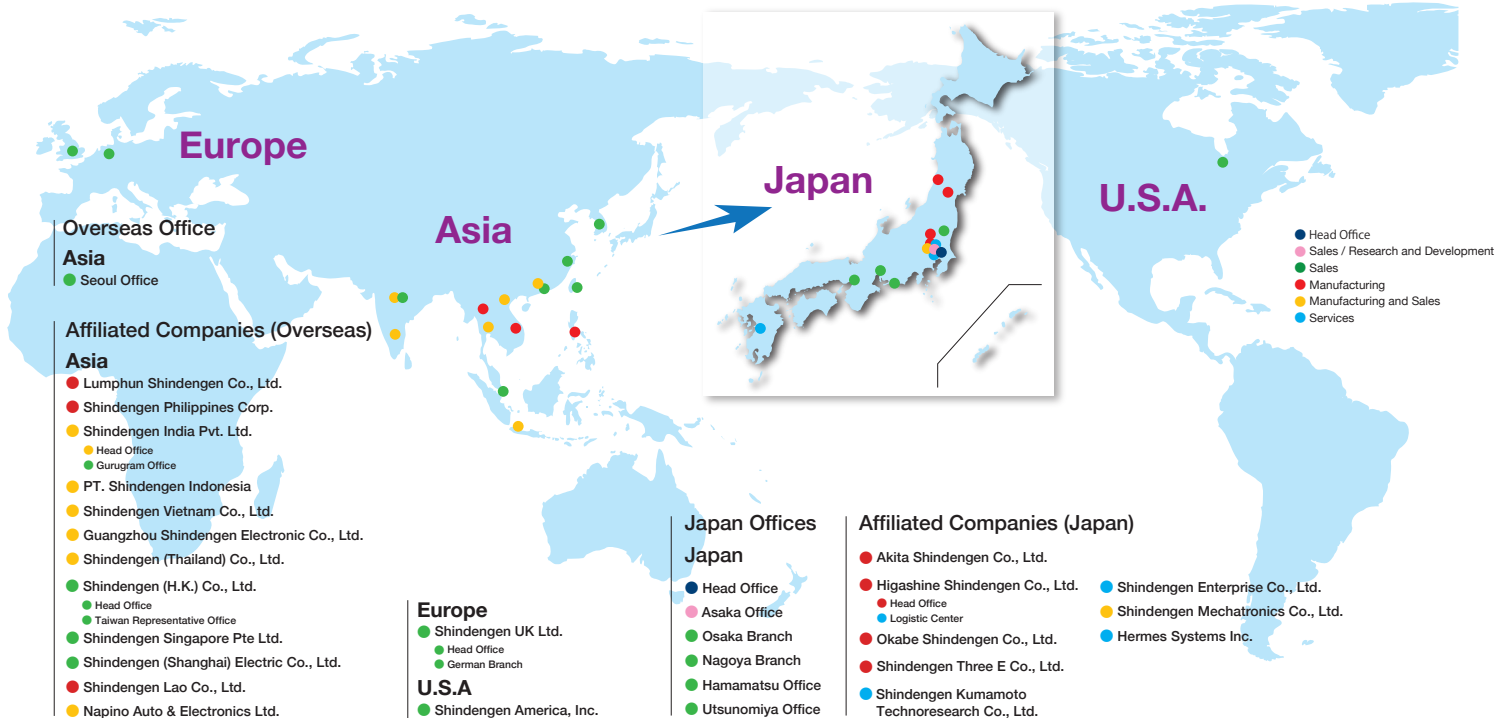
Parts number	SH846CA	
Ratings	Input Operation Voltage	14.5±0.2V
	Output max phase current	13.7A
Size	Size (W*L*H mm)	94* 78.5 * 28
	※Excluding mounting part and connector	
	Weight (kg)	0.28
REG Type	SH type 3phase full wave	



## Maximizing Energy Conversion Efficiency



## Be with our Customers by using our Global Outlook



### Contact

#### ShinDengen India Pvt. Ltd. Gurugram Office

**Address:**  
Office Unit No.103C, First Floor, Time Tower, MG Road,  
Gurugram, 122002, Haryana, India

**Phone:** + 91-124-4389742



<https://www.shindengen.com/>